



HealthWay FFU


PROFESSIONAL DFS
AIR PURIFICATION
FAN FILTER UNIT



The HealthWay FFU (Fan Filter Unit) is easily installed by replacing ceiling tiles & can work with or without a ducted return. This use of our DFS technology results in an energy savings of up to 70% per installed unit compared to HEPA alternatives.

HealthWay FFU

Professional DFS Air Purification Fan Filter Unit

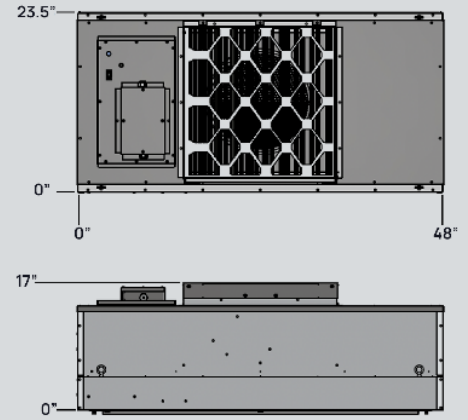
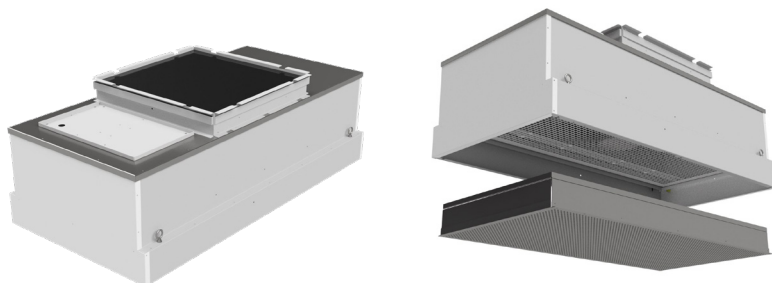
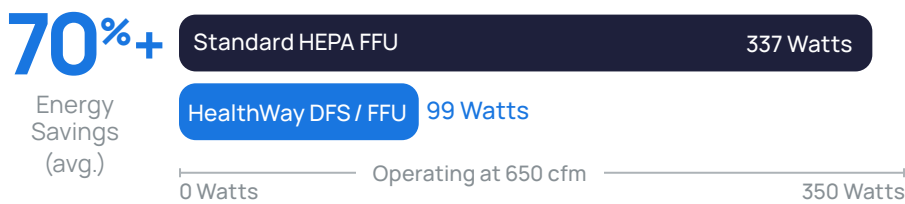
 Disinfecting Filtration System (DFS) is our proprietary electronically enhanced filtration technology.

Specifications

| ITEM | CURRENT |
|--------------------------------------|-----------------------|
| Incoming Power | 120/220 V 60/50 Hz 1φ |
| Operating FLA (at 650 CFM) | 1.15 A |
| Operating Power Usage (at 650 CFM) | 99 w |
| Rated Power Consumption | 125 W |
| Rated Current Draw | 1.55 A |
| Internal Fuse | 5 A |
| Noise (at 650 CFM) | 59 dBa |
| Maximun Operating Temperature | 120° F |
| Single Pass Efficiency at 0.3 micron | 99.97% |
| Pressure Drop (at 650 CFM) | 0.23" wc |
| Air Flow Capacity* | 100-650 CFM |
| Main Filter Changing Location | In Room |
| Pre-filter Changing Location | Overhead |
| Pre-filter Size LxW xTh | 20" x 20" x 1" |
| Unit Finish | White Powder Coat |
| Housing Material | Steel |

*Flow rate is adjustable. Consult factory for more information.

Energy Use Comparison of Standard HEPA FFU vs. HealthWay FFU



DIMENSIONS

Height - 16.5" (419 mm)

Width - 23.625" (600 mm)

Depth - 47.625" (1210 mm)

WEIGHT

126lbs (57kg)

FEATURES

- Significant energy savings
- Utilizes proprietary DFS technology
- Quieter than HEPA alternatives
- Field adjustable flow rate



| ITEM | PART # |
|------------|---------------------|
| FFU Unit | 0204-A-01000-N-0003 |
| FFU Filter | 0204-R-01000-N-0001 |



UL 867 Certified